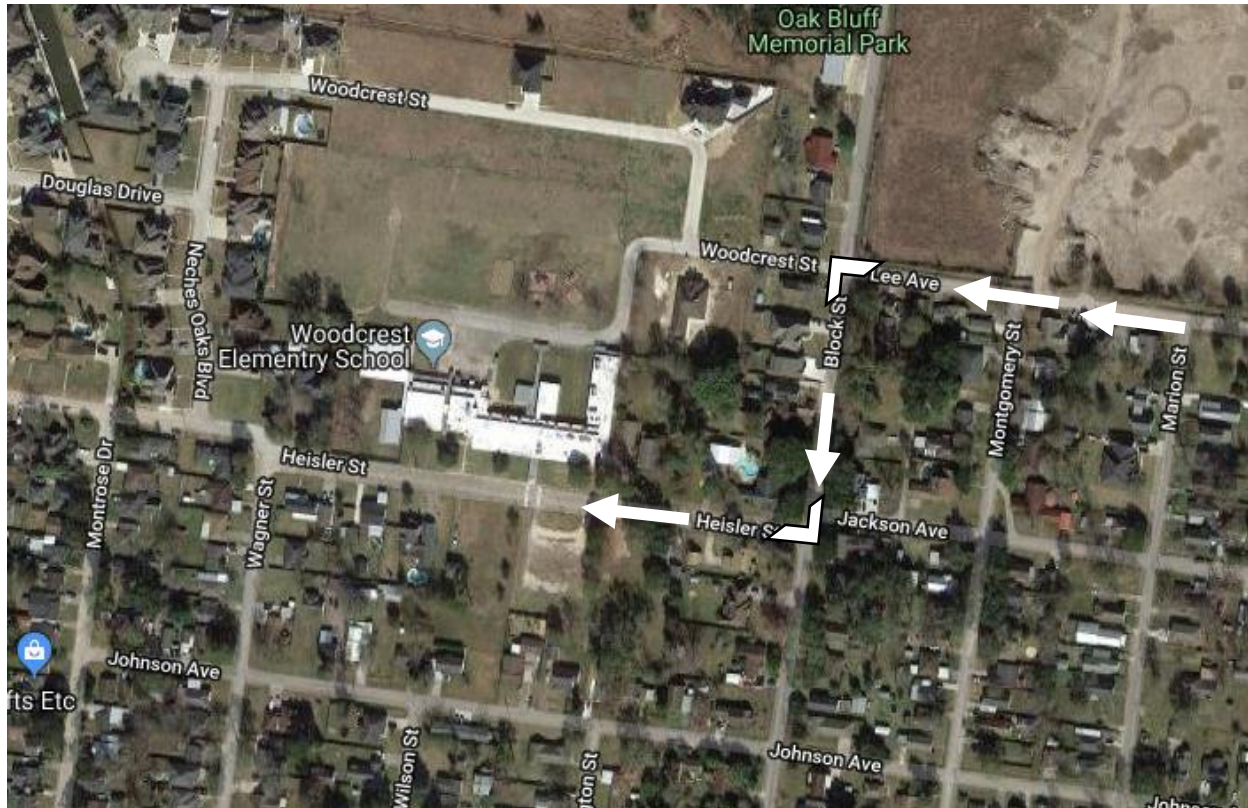


Adjustment to Pick-Up Line



Parents,

In order to reduce the traffic congestion on Block Street, we would like for you to enter the **Woodcrest PICK UP** line from **Block Street coming from Lee Ave.** You will need to drive down Montgomery St., Marion St., or Dallas St and then turn left onto Lee Ave., then left on Block St. This is shown in the diagram above. Please do not start a line on Block Street coming from Grigsby Ave. Please remember to keep the intersections open and **please do not block ANY driveways.** We would like to start this effective immediately. This dismissal system is very safe for our students and moves very quickly, so please adhere to these changes. Please do NOT start the line until 2:30 or after. If you can wait until about 3:10 to be in line, this will also help with congestion. Your help in this new afternoon pick up line is greatly appreciated and will help with safety of all in our community.

Thanks,

Mrs. Abel